






# INSTALLATION INSTRUCTIONS

## for Single Room ERV Outer Hood

No	Item	Photo
Type #1	Metal outer hood	
Type #2	Metal outer hood with electrical heater	
Type #3	Plastic round grille	
Type #4	Plastic square grille	
Type #5	Stainless steel round grille	

### Type #1: Metal outer hood

**Step 1:** Drill a 160~170 mm round hole in the wall. The hole diameter is 160~170mm.

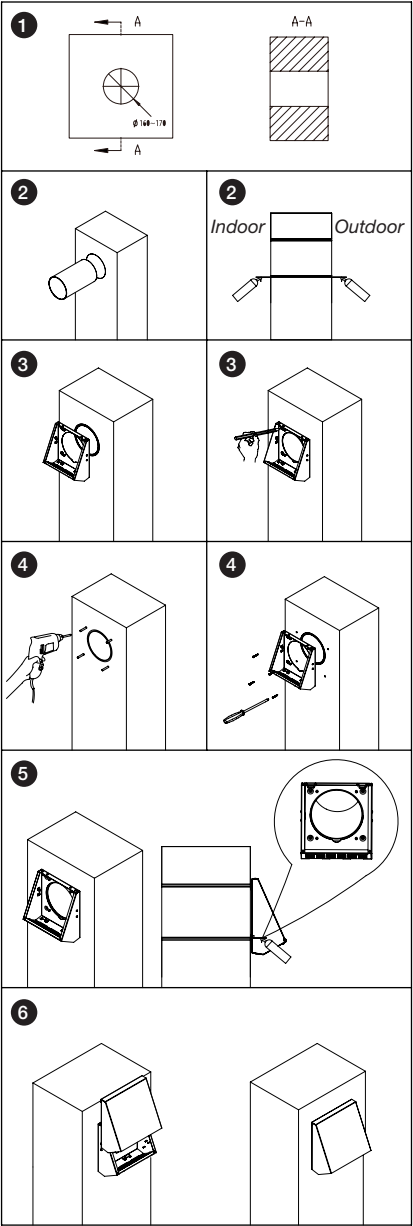
**Step 2:** Put the PVC pipe into the wall. Adjust it to fit the wall then use PU foam to fill the gap between the PVC pipe and the wall both indoors and outdoors.

**Step 3:** Take out the metal outer hood, align the bottom of the metal outer hood with the round hole on the outside, mark the four screw holes on the metal outer hood.

**Step 4:** Use expanding glue particles and screws to fix the bottom of the metal outer hood.

**Step 5:** Fill the gap between the metal hood lower cover and the PVC pipe with PU foam adhesive.

**Step 6:** Cover the metal hood upper cover onto the metal hood lower cover and align them.

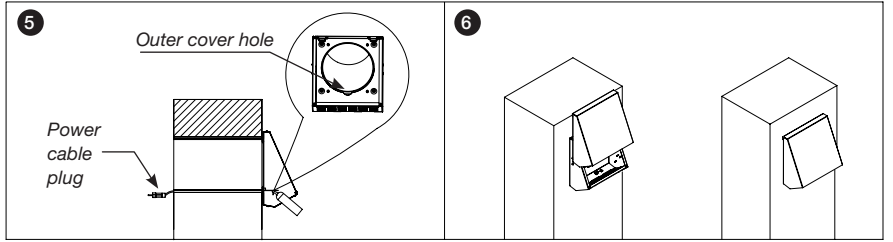


### Type #2: Metal outer hood with electrical heater

**Step 1 ~ Step 4** refer to type #1.

**Step 5:** Fill the gap between the metal hood lower cover and the PVC pipe with PU foam adhesive, The power cable should run from the outer cover hole, through the wall hole to the interior, and be connected to the power supply.

**Step 6:** Cover the metal hood upper cover onto the metal hood lower cover and align them.



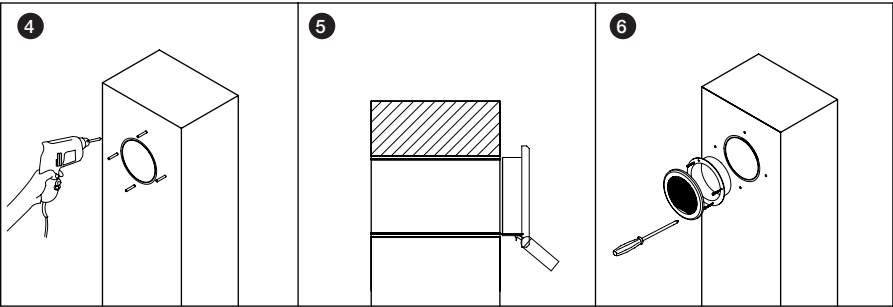
### Type #3: Plastic round grille

**Step 1 ~ Step 3** refer to type #1.

**Step 4:** Fix expanding glue particles on the designated position.

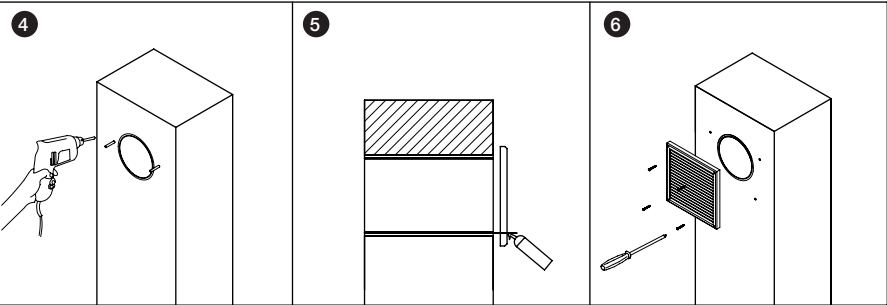
**Step 5:** Fill the gap between the plastic round grille and the PVC pipe with PU foam adhesive.

**Step 6:** Use the screws to fix the plastic round hood.



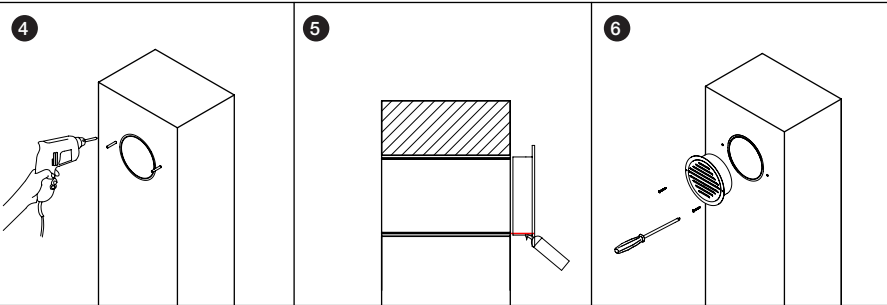
Type #4: Plastic square grille

- Step 1 ~ Step 3** refer to type #1.
- Step 4:** Fix expanding glue particles on the designated position.
- Step 5:** Fill the gap between the plastic square grille and the PVC pipe with PU foam adhesive.
- Step 6:** Use the screws to fix the plastic square grille.



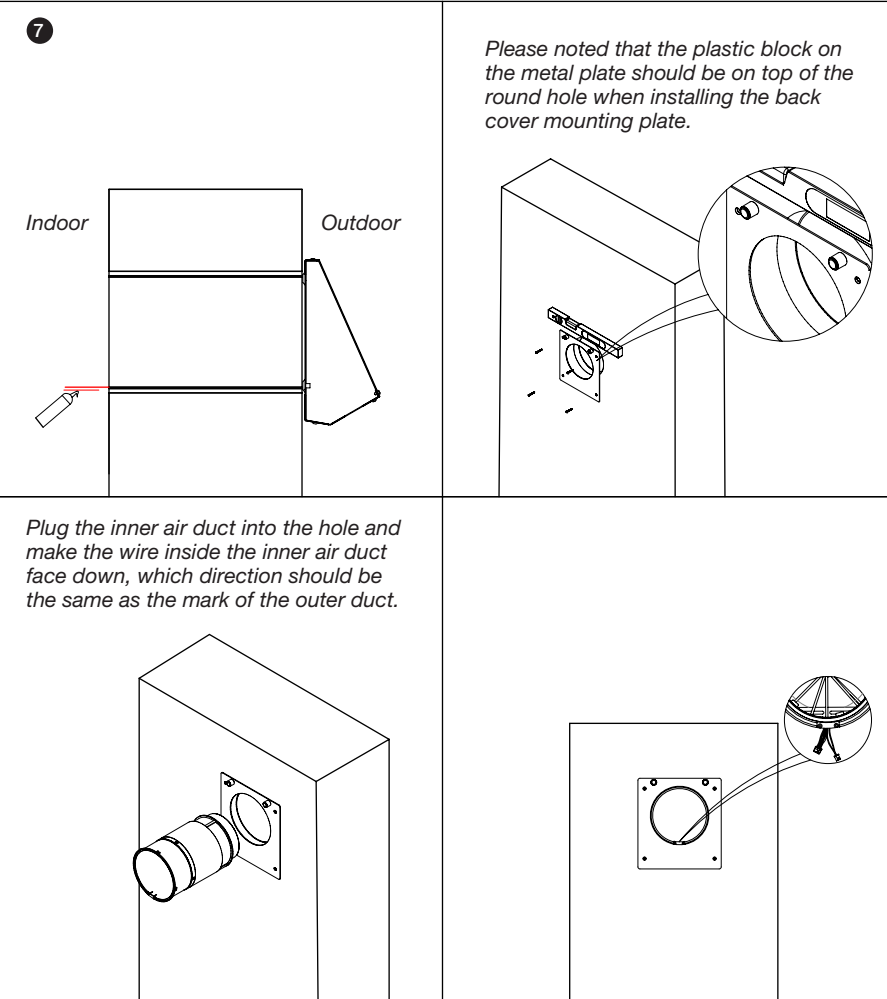
Type #5: Stainless steel round grille

- Step 1 ~ Step 3** refer to type #1.
- Step 4:** Fix expanding glue particles on the designated position.
- Step 5:** Fill the gap between the stainless steel round grille and the PVC pipe with PU foam adhesive.
- Step 6:** Use the screws to fix the stainless steel round grille.



Ventilator indoor part installation

- Step 7:** Then install the back cover mounting plate, align the round hole of the back cover the mounting plate with the round hole on the wall, and measure the level of the mounting plate with a level ruler to ensure that the mounting plate installation is horizontal, then mark the hole, punch in the expansion rubber grain, then align the mounting plate with the hole and fixing it with a screw.



- Step 8:** Install the main unit on the indoor surface wall, and connect the adapter wire from the back of the main unit to the wiring of the fan and temperature sensor exposed by the inner duct in the wall. Tidy the wiring, align the main unit with the plastic block protruding on the back cover board and install it in. (There are corresponding concave holes on the back of the main unit.) Just install it, no other operations are required. The back of the main unit is equipped with a strong magnet, which will automatically attract the mounting plate on the wall (After installation, please check that if there is a large gap between the main unit and the mounting plate. If yes, it means that the wires in the main unit are not sorted out. Therefore, please remove the main unit and reinstall it).

